

## AS Standards

	Commercial 95 340	Commercial 95 340 FR
<b>Performance</b>		
Maximum force	warp 670 N/50mm	580 N/50mm
Elongation at max. force	warp 117%	98%
Maximum force	weft 2400 N/50mm	2000 N/50mm
Elongation at max. force	weft 83%	71.5%
Breaking force	warp 990 N	930 N
Breaking force	weft 2000 N	2000 N
Tear strength	warp 184 N	194 N
Tear strength	weft 347 N	282 N
Bursting pressure	3500 kPa	3600 kPa
Bursting force	1937 N	1944 N
<b>Fabric Properties</b>		
Nominal Fabric Mass	340 gsm ± 20	340 gsm ± 20
<b>Roll Specification</b>		
Width	3m (folded)	3m (folded)
Length	40m	40m
<b>Flammability Info</b>		
Flammability Index - 12	Flammability Index - 12	Flammability Index - 1
Ingnitability Index - 10	Ingnitability Index - 10	Ingnitability Index - 13
Spread of Flame Index - 7	Spread of Flame Index - 7	Spread of Flame Index - 8
Heat Evolved Index - 5	Heat Evolved Index - 5	Heat Evolved Index - 3
Smoke Developed Index - 4	Smoke Developed Index - 4	Smoke Developed Index - 6

## ASTM Standards

	Commercial 95 340	Commercial 95 340 FR
<b>Performance</b>		
Maximum force	warp 189.1 lbf	158.6 lbf
Elongation at max. force	warp 103.67%	88.7%
Maximum force	weft 462.3 lbf	412.3 lbf
Elongation at max. force	weft 63%	49%
Breaking force	warp 52.2 lbf	43 lbf
Breaking force	weft 52.2 lbf	39.6 lbf
Tear strength		
Tear strength		
Bursting pressure		
Bursting force	422 lbf	408 lbf
<b>Fabric Properties</b>		
Nominal Fabric Mass	340 gsm ± 20	340 gsm ± 20
<b>Roll Specification</b>		
Width	9 ft. 10 in. (folded)	9 ft. 10 in. (folded)
Length	131 ft. 3 in.	131 ft. 3 in.
<b>Flammability Info</b>		
ASTM E84 19B Class A	ASTM E84 19B Class A	CSFM Title 19 1237.1 NFPA 701 Test Methods 1&2 ASTM E84 19B Class A



## Commercial NinetyFive

340 GSM | Standard & Flame Retardant

The most trusted HDPE shade fabric in the industry.



Data provided in this brochure represents typical averages from independent testing and quality assurance testing and should not be taken as a minimum specification nor as forming any contract between GALE Pacific and another party. Due to continuous product improvement, refer to the GALE Pacific Commercial Fabrics website for the latest technical performance information.

Please note, due to limitations of the printing process, colors pictured may not represent the true color.



<p><b>GALE Pacific ANZ</b> 145 Woodlands Drive, Braeside, Victoria 3195 Australia Toll Free: +1 800 331 521 au.cs@galepacific.com</p>	<p><b>GALE Pacific AMERICAS</b> 5311 77 Center Drive, Suite 150, Charlotte, NC 28217 USA Toll Free: +1 800 560 4667 cscommercial@galepacific.com</p>	<p><b>GALE Pacific MIDDLE EAST</b> JAFZA 15, 6th Floor, Room 604, Jebel Ali Free Zone, Dubai United Arab Emirates +971 4 881 7114 cscommercial@galepacific.com</p>	<p><b>GALE Pacific ASIA</b> 777 Hengshan W Road, Beilun, Ningbo, Zhejiang 315800 China Toll Free: +1 800 331 521 au.cs@galepacific.com</p>	<p><b>GALE Pacific EUROPE</b> Toll Free: +1 800 560 4667 cscommercial@galepacific.com</p>
---	--	--	--	---

[galecommercial.com](http://galecommercial.com)

Architectural  
SHADE FABRIC

Tension Structures  
Awnings  
Shade Sails  
Car Park Structures

# Commercial NinetyFive

340 GSM | Standard & Flame Retardant

The cornerstone of the GALE Pacific portfolio, Commercial NinetyFive brings over 25 years of versatility, reliability, and unmatched UV protection.

Free from lead and phthalates, Commercial NinetyFive is the first architectural shade fabric granted Oeko-Tex® 100 and Greenguard® certifications.



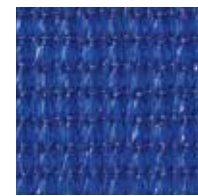
White  
497736  
495732



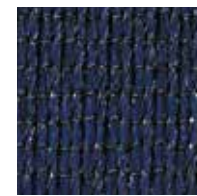
Natural  
445003  
495541



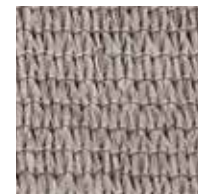
Desert Sand  
444983  
495565



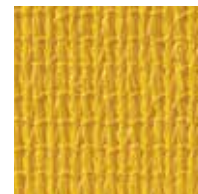
Aquatic Blue  
444938  
495671



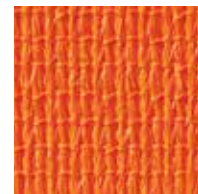
Navy Blue  
445010  
495602



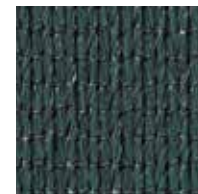
Driftwood  
502294  
502348



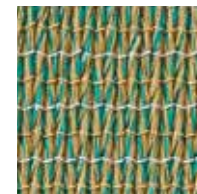
Yellow  
445072  
495619



Orange  
459215  
495633



Brunswick Green  
444952  
495572



Rivergum  
445027  
495589



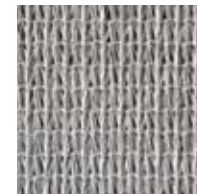
Cherry Red  
444976  
495695



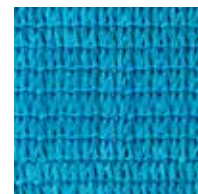
Deep Ochre  
444990  
495688



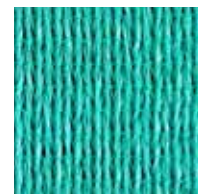
Bright Green  
459208  
495596



Stone  
502300  
502355



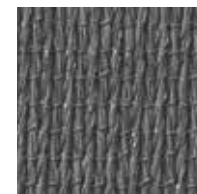
Bluebird  
502263  
502317



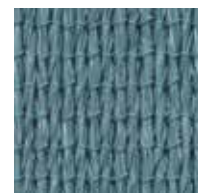
Aquamarine  
502287  
502331



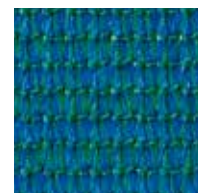
Steel Grey  
445041  
495718



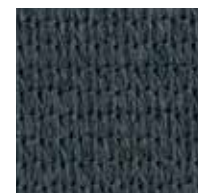
Gun Metal  
455262  
495527



Sky Blue  
445034  
495626



Turquoise  
445065  
495664



Charcoal  
444969  
495558



Black  
444945  
495640

## Expansive color assortment

Offering the most expansive color assortment of HDPE shade fabrics, Commercial NinetyFive ensures design accuracy with its precision-driven stentering process.

## Effortless installation

Designed for longevity and ease, these maintenance-free shades have a best-in-class lay flat process for effortless installation.

## Industry-leading UVR block

Each shade offers an industry-leading 96% UVR block with full warranties against UV degradation.

All colors meet the most tested regional flame retardancy standards, including CSFM & NFPA 701 (Methods 1 & 2), which ensures our fabrics can be used globally.